



0578621024

086 8945350

New Road, Portlaoise. Co. Laois R32 K820

# **PUMP REPAIR**

## **COMMON RAIL**

**Inlet Metering Valves**

**Pressure Control Valves**

**Volume Control Valves**

**Suction Control Valves**



### **COMMON RAIL—PUMP**

Portlaoise Diesel offer a comprehensive range of **Common Rail Pump**, genuine and aftermarket **Regulating/Metering valves**.

Our range of pump valves include all the major component manufacturers including **Bosch, Delphi, Continental and Denso**, which cover most of the European market OM vehicle makes.

The Inlet Metering Valve (IMV) on a Delphi common rail fuel pump regulates the internal fuel pressure via the ECU, ensuring a constant pressure in the fuel injection system.

[Inlet Metering Valve](#)



Similarly the Suction Control valve (SCV) on a Denso common rail fuel pump regulates the internal pressure via the ECU, ensuring a constant pressure in the fuel injection system.

[Suction Control Valve](#)



A Volume Control Valve (VCV) on a Continental common rail fuel pump works by regulating the volume of fuel from the pump to the rail.

[Volume Control Valve](#)



A Pressure Control Valve (PCV) or Pressure Regulator is also a means to control the pressure output of a pump.

[Pressure Control Valve](#)



## ALL MAKES PRESSURE REGULATORS / CONTROL VALVES



**POR001**

Equivalent to: [096710-0120](#)

Suction Control Valve

**Toyota**

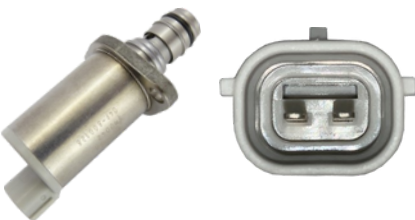


**POR002**

Equivalent to: [096710-0130](#)

Suction Control Valve

**Toyota**

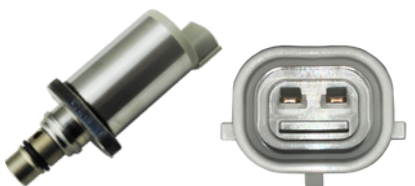


**POR003**

Equivalent to: [294009-0990](#)

Suction Control Valve

**Toyota**

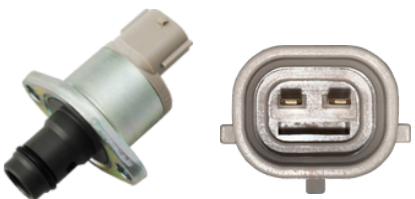


**POR004**

Equivalent to: [294009-0120](#) / [DCRS300120](#)

Suction Control Valve

**Mazda / Mitsubishi / Nissan / Vauxhall / GM**



**POR005**

Equivalent to: [294009-0260](#)

Suction Control Valve

**Citroen / Fiat / Ford / Land Rover / Nissan / PSA / Subaru**



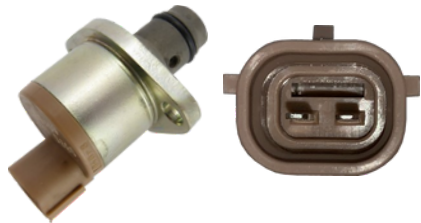
**POR006**

Equivalent to: [294200-0040](#)

Suction Control Valve

**Toyota**

ALL MAKES PRESSURE REGULATORS / CONTROL VALVES

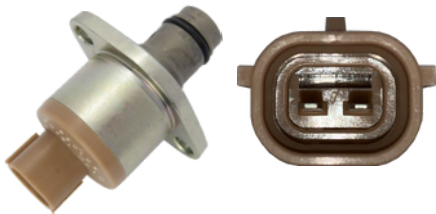


**POR007**

Equivalent to: [294200-0160](#)

Suction Control Valve

**Mazda / Isuzu / Mitsubishi / John Deere / Ford / Kubota / Fuji /**



**POR008**

Equivalent to: [294200-0170](#)

Suction Control Valve

**Hyundai / Hino / Isuzu / Sdec / Fawde**



**POR009**

Equivalent to: [294200-0300](#)

Suction Control Valve

**Toyota**



**POR010**

Equivalent to: [294200-0370](#)

Suction Control Valve

**Hino / Isuzu / Fawde / Kubota**

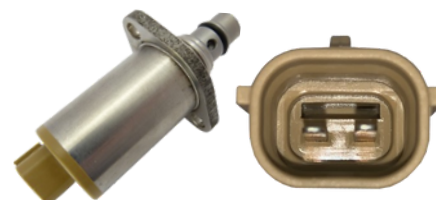


**POR011**

Equivalent to: [294200-0460](#)

Suction Control Valve

**Mazda / Isuzu**



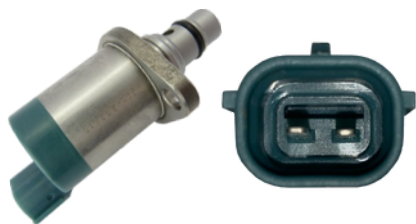
**POR012**

Equivalent to: [294200-0650](#)

Suction Control Valve

**Isuzu**

ALL MAKES PRESSURE REGULATORS / CONTROL VALVES



**POR013** Equivalentent to: 294200-2760

Suction Control Valve

**Mazda / Isuzu / Mitsubishi / John Deere / Ford / Kubota / Fuji /**



**POR014** Equivalentent to: 9109-903

Inlet Metering Valve Kit

**Ford / Renault**



**POR015** Equivalentent to: 9109-930A

Inlet Metering Valve Kit

**Mercedes Benz**



**POR016** Equivalentent to: X39 800 300 006Z

Volume Control Regulator

**PSA / Ford**



**POR017** Equivalentent to: A2C2000385980

90 Degree Solenoid

**Land Rover**



**POR018** Equivalentent to: X39-800-300-005Z

Pressure Regulator

**PSA**



DELPHI IMV / HPV / ALL MAKES PRESSURE REGULATORS / CONTROL VALVES



**POR019**

Equivalent to: [X39-800-300-018Z](#)

Volume Control Regulator

**PSA**



**POR020**

Equivalent to: [A2C8761150080](#)

Continental Pressure Control Valve

**PSA / Ford**



**POR021**

Equivalent to: [A2C9318740080](#)

Pressure Regulator

**Ford Transit**



**POR022**

Equivalent to: [312-5620](#)

CAT/Mitsubishi Solenoid



**POR023**

CAT/Mitsubishi Solenoid with O-ring



**POR024**

Equivalent to: [M002-030](#)

Inlet Metering Valve Kit

**Ford / Renault**

DELPHI INLET METERING VALVES / HIGH PRESSURE VALVE / DENSO SCV



**POR025**

Equivalent to: 9109-927

Inlet Metering Valve Kit  
**Citroen / JCB / Peugeot**



**POR026**

Equivalent to: 9109-930A

Inlet Metering Valve Kit  
**Mercedes Benz**



**POR027**

Equivalent to: 9109-936A

Inlet Metering Valve Kit  
**Bobcat / Citroen / Dacia / Daedong / Doosan / DS / Fiat / Ford / JCB /**



**POR028**

Equivalent to: 9109-946

Inlet Metering Valve Kit  
**Audi / Chevrolet / Hyundai / Infiniti / Kia / Merc / Seat / Opel / Skoda / Ssangyong / Vauxhall / VW**



**POR029**

Equivalent to: 9307-522A

High Pressure Valve  
**Mercedes Benz**



**POR001**

Kit (Includes red & green): [DCRS210120](#)

Suction Control Valve  
**Toyota**

## DENSO SUCTION CONTROL VALVES



**POR001**

Kit (Includes red & green): [DCRS210120](#)

Suction Control Valve

**Toyota**



**POR030**

Equivalent to: [294009-0660/294200-0040](#)

Suction Control Valve

**Toyota**



**POR031**

Equivalent to: [294009-1370](#)

Suction Control Valve

**Toyota**



**POR032**

Equivalent to: [294009-1380](#)

Suction Control Valve

**Toyota**



**POR033**

Equivalent to: [294200-0260](#)

Suction Control Valve

**Isuzu, Mitsubishi, Ford, Mazda, John Deere, Hino, Kubota, Opel,**



**POR034**

Equivalent to: [294009-0980/294200-0610](#)

Suction Control Valve

**Toyota**



## DENSO SUCTION CONTROL VALVES



**POR035**

Equivalent to: 294200-0660

Suction Control Valve

**Mazda, John Deere, Isuzu, Nissan, Hino, Mitsubishi, Perkins,**



**POR036**

Equivalent to: 294200-0160/294009-0190

Suction Control Valve

**Mazda**

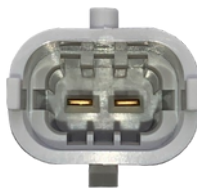


**POR037**

Equivalent to: 294200-0460/294009-1110

Suction Control Valve

**Mazda, Opel, Isuzu**



**POR038**

Equivalent to: 294009-1500/294009-1990

Suction Control Valve

**GM**



**POR039**

Equivalent to: 294009-1700

Suction Control Valve

**Isuzu, Nissan, Yanmar, Mitsubishi, Kubota, Tico, Hyundai, IHI**



**POR040**

Equivalent to: 294009-0250

Suction Control Valve

**Mitsubishi**

## VDO PRESSURE/VOLUME CONTROL VALVES



**POR041**

A2C20000719Z

Volume Control Valve

**Citroen, Jaguar, Land Rover, Peugeot,**



**POR042**

A2C2000382580

Volume Control Valve

**Land Rover**



**POR043**

A2C2720007280

Volume Control Valve

**Navistar**



**POR044**

A2C53259841Z

Volume Control Valve

**Renault**



**POR045**

A2C5329064080

Volume Control Valve

**VW, DV6C PSA**



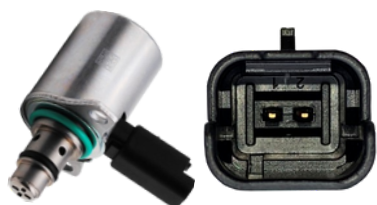
**POR046**

A2C8761150080

Volume Control Valve

**Ford DV6C, K9K Gen 6**

## VDO PRESSURE/VOLUME CONTROL VALVES



**POR047**

A2C9318740080

Volume Control Valve

**Ford Puma**



**POR048**

X39-800-300-006Z

Volume Control Valve



**POR049**

X39-800-300-018Z

Volume Control Valve

**Citroen, Peugeot**



**POR050**

A2C59506225

Pressure Control Valve

**Citroen, Dacia, Fiat, Ford, Jaguar, Land Rover, Nissan, Peugeot,**

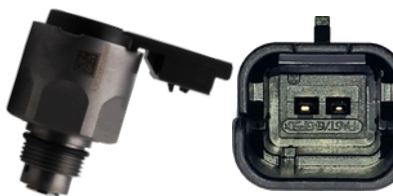


**POR051**

A2C2000070480

Pressure Control Valve

**Jaguar, Range Rover, Land Rover**



**POR051**

A2C2000385980

Pressure Control Valve

**Citroen, Jaguar, Land Rover**