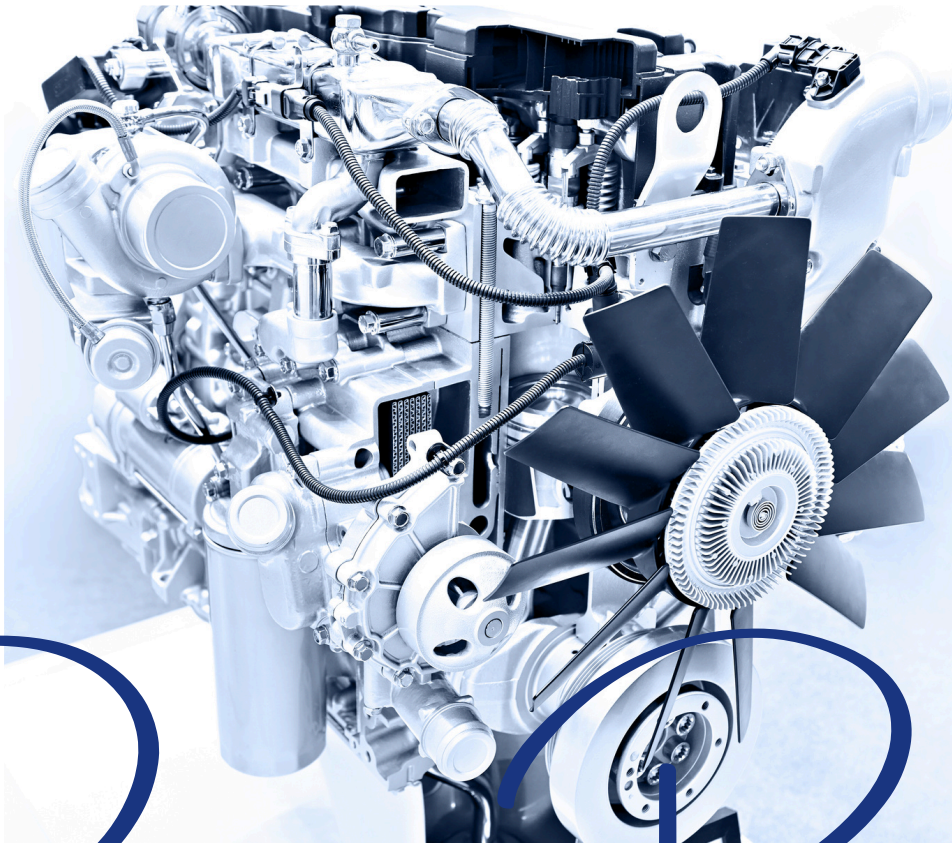




057 8621024

www.portlaoisediesel.com



Pump Repair

**Volume Control Valves
Suction Control Valves
Pressure Control Valves
Inlet Metering Valves**

Portlaoise Diesel offer a comprehensive range of Common Rail Pump, genuine and aftermarket Regulating/Metering valves. Our range of pump valves include all the major component manufacturers including Bosch, Delphi, Continental and Denso, which cover most of the European market OM vehicle makes



A Volume Control Valve (VCV) on a Continental common rail fuel pump works by regulating the volume of fuel from the pump to the rail.



A Pressure Control Valve (PCV) or Pressure Regulator is also a means to control the pressure output of a pump.



The Inlet Metering Valve (IMV) on a Delphi common rail fuel pump regulates the internal fuel pressure via the ECU, ensuring a constant pressure in the fuel injection system.



The Suction Control valve (SCV) on a Denso common rail fuel pump regulates the internal pressure via the ECU, ensuring a constant pressure in the fuel injection system. Inlet Metering Valve Volume Control Valve Suction Control Valve Pressure Control Valve



Suction



Control



Valves





Red & Green SCV Kit

Toyota

POR001



294009-0990 SCV

Toyota

POR003



294009-0120 SCV

Mazda/Mitsubishi/Nissan/Opel

POR004



294009-0260 SCV

Citroen/Ford/Fiat/Landrover/Nissan/Subaru

POR005



294200-0040 SCV

Toyota

POR006



294200-0160 SCV

Mazda/Mitsubishi/John Deere/Ford/Kubota/Isuzu

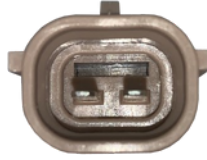
POR007



294200-0170 SCV

Hino/Isuzu/Hyundai

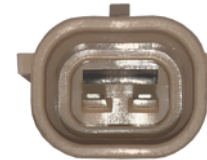
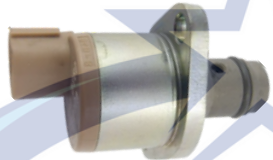
POR008



294200-0300 SCV

Toyota

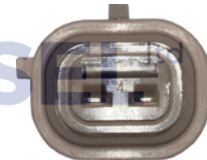
POR009



294200-0370 SCV

Hino/Isuzu/Kubota

POR010



294200-0460 SCV

Mazda/Isuzu

POR011



294200-0650 SCV

Isuzu

POR012



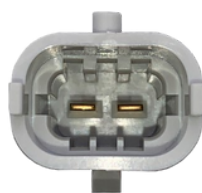
294200-2760 SCV

Isuzu/Nissan/Mitsubishi/Yanmar/Kubota/Hyundai

POR013



294200-0610



POR034

Toyota



294009-0190



POR036

Mazda



294009-1110



POR037

Mazda/Opel/Isuzu
Ltd



294009-1990



POR038

GM



294009-0250



POR040

Mitsubishi

PORTLAOISE
DIESEL

050 8621024

www.portlaoisediesel.com



Volume



Control



Valves





A2C20000719Z

POR041

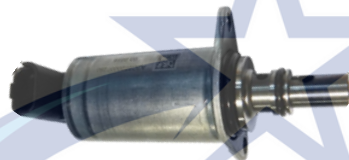
Citroen/Jaguar/Land Rover/Peugeot



A2C2000382580

POR042

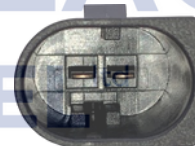
Land Rover



A2C2720007280

POR043

Navistar



A2C5329064080

POR044

VW



A2C53259841Z

POR045

Renault



X39-800-300-018Z

POR019

Citroen/Peugeot



X39-800-300-006Z

POR016

Ford/Citroen/Peugeot



057 8621024

www.portlaoisediesel.com



Pressure



Control



Valves





A2C59506225

POR018

Citroen/Dacia/Ford/Fiat/Jaguar/Land Rover
/Nissan/Reanult



A2C2000070480

POR051

Range Rover /Jaguar/Land Rover



A2C2000385980

POR052

Citroen/Jaguar/Land Rover



A2C8761150080

POR020

Ford



A2C9318740080

POR047

Ford

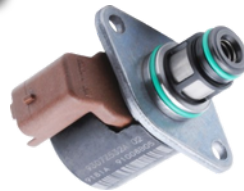
037 8621024
www.portlaoisediesel.com



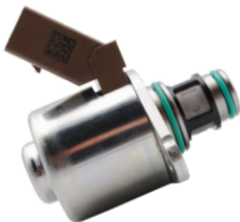
Inlet



Metering



Valves



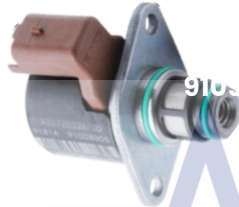


9109-903

Ford/Renault

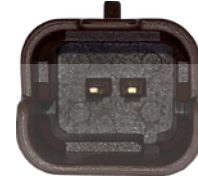


POR014



9109-927

Citroen/JCB/Peugeot



POR053



9109-930A

Merc Ltd



POR054

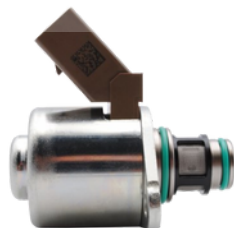


9109-936A

Various



POR027



9109-946

Various



POR055

BOSCH COMMON RAIL

RAIL PRESSURE SENSORS, REGULATORS AND VALVES

Pressure Limiting Valve

The pressure limiting valve reduces the system pressure in case of overload and thus protects the other injection components from damage.



Pressure Regulator

The pressure regulator controls the pressure of the rail. The pressure of the rail must be a constant and even pressure controlled by the regulator.



Pressure Sensor

The pressure sensor monitors the fuel pressure in the rail. The constant measurement is relayed to the ECU. This enables the ECU to deliver the correct amount of fuel which the vehicle demands.



Available to order