



0578621024

086 8945350

New Road, Portlaoise. Co. Laois R32 K820

PUMP REPAIR

COMMON RAIL

Inlet Metering Valves

Pressure Control Valves

Volume Control Valves

Suction Control Valves



OVERVIEW

COMMON RAIL—PUMP

Portlaoise Diesel offer a comprehensive range of **Common Rail Pump**, genuine and aftermarket **Regulating/Metering valves**.

Our range of pump valves include all the major component manufacturers including **Bosch, Delphi, Continental and Denso**, which cover most of the European market OM vehicle makes.

The Inlet Metering Valve (IMV) on a Delphi common rail fuel pump regulates the internal fuel pressure via the ECU, ensuring a constant pressure in the fuel injection system.

[Inlet Metering Valve](#)



Similarly the Suction Control valve (SCV) on a Denso common rail fuel pump regulates the internal pressure via the ECU, ensuring a constant pressure in the fuel injection system.

[Suction Control Valve](#)



A Volume Control Valve (VCV) on a Continental common rail fuel pump works by regulating the volume of fuel from the pump to the rail.

[Volume Control Valve](#)



A Pressure Control Valve (PCV) or Pressure Regulator is also a means to control the pressure output of a pump.

[Pressure Control Valve](#)



ALL MAKES PRESSURE REGULATORS / CONTROL VALVES



POR001

Equivalent to: [096710-0120](#)

Suction Control Valve (SOLD AS KIT INC POR002)

Toyota

€250



POR002

Equivalent to: [096710-0130](#)

Suction Control Valve (SOLD AS KIT INC POR001)

Toyota

€250



POR003

Equivalent to: [294009-0990](#)

Suction Control Valve

Toyota

€190



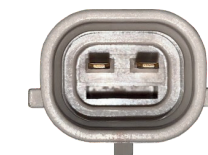
POR004

Equivalent to: [294009-0120](#)

Suction Control Valve

Mazda / Mitsubishi / Nissan / Vauxhall / GM

€130



POR005

Equivalent to: [294009-0260](#)

Suction Control Valve

Citroen / Fiat / Ford / Land Rover / Nissan / PSA / Subaru

€130



POR006

Equivalent to: [294200-0040](#)

Suction Control Valve

Toyota

€195

ALL MAKES PRESSURE REGULATORS / CONTROL VALVES



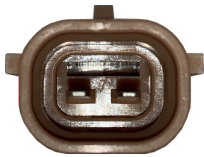
POR007

Equivalent to: [294200-0160](#)

Suction Control Valve

Mazda / Isuzu / Mitsubishi / John Deere / Ford / Kubota / Fuji /

€195



POR008

Equivalent to: [294200-0170](#)

Suction Control Valve

Hyundai / Hino / Isuzu / Sdec / Fawde

€120



POR009

Equivalent to: [294200-0300](#)

Suction Control Valve

Toyota

€170



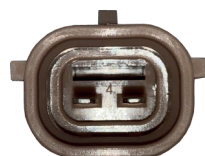
POR010

Equivalent to: [294200-0370](#)

Suction Control Valve

Hino / Isuzu / Fawde / Kubota

€120



POR011

Equivalent to: [294200-0460](#)

Suction Control Valve

Mazda / Isuzu

€120



POR012

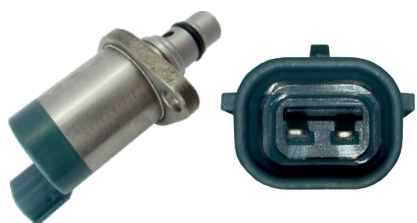
Equivalent to: [294200-0650](#)

Suction Control Valve

Isuzu

€195

ALL MAKES PRESSURE REGULATORS / CONTROL VALVES



POR013

Equivalent to: 294200-2760

Suction Control Valve

Mazda / Isuzu / Mitsubishi / John Deere / Ford / Kubota / Fuji /

€150



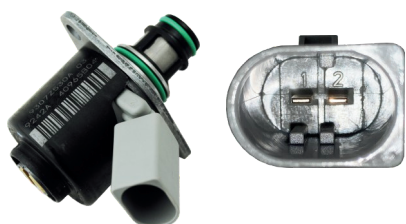
POR014

Equivalent to: 9109-903

Inlet Metering Valve Kit

Ford / Renault

€150



POR015

Equivalent to: 9109-930A

Inlet Metering Valve Kit

Mercedes Benz

€120



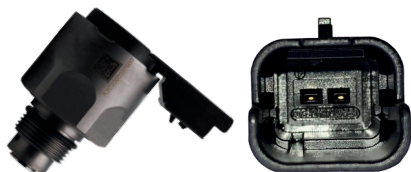
POR016

Equivalent to: X39 800 300 006Z

Volume Control Regulator

PSA / Ford

€190



POR017

Equivalent to: A2C2000385980

90 Degree Solenoid

Land Rover

€270



POR018

Equivalent to: X39-800-300-005Z

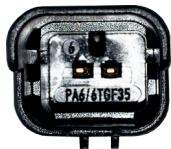
A2C59506225

Pressure Regulator

PSA

€120

DELPHI IMV / HPV / ALL MAKES PRESSURE REGULATORS / CONTROL VALVES



POR019

Equivalent to: [X39-800-300-018Z](#)

Volume Control Regulator

PSA

€250



POR020

Equivalent to: [A2C8761I50080](#)

Continental Pressure Control Valve

PSA / Ford

€130



POR021

Equivalent to: [A2C9318740080](#)

Pressure Regulator

Ford Transit

€130



POR022

Equivalent to: [312-5620](#)

CAT/Mitsubishi Solenoid

€210

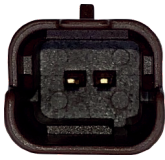


POR023

CAT/Mitsubishi Solenoid with O-ring

€230

DELPHI INLET METERING VALVES / HIGH PRESSURE VALVE / DENSO SCV

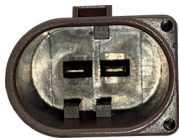


POR024

Equivalent to: 9109-927

Inlet Metering Valve Kit
Citroen / JCB / Peugeot

€110



POR025

Equivalent to: 9109-946

Inlet Metering Valve Kit
**Audi / Chevrolet / Hyundai / Infiniti / Kia / Merc / Seat / Opel /
Skoda / Ssangyong / Vauxhall / VW**

€110



POR026

Equivalent to: 9307-522A

High Pressure Valve
Mercedes Benz

€160

DENSO SUCTION CONTROL VALVES



POR027

Equivalent to: [294009-1380](#)

Suction Control Valve

Toyota

€195



POR028

Equivalent to: [294009-0980](#)

Suction Control Valve

Toyota

€165



POR029

Equivalent to: [294200-0660](#)

Suction Control Valve

Mazda, John Deere, Isuzu, Nissan, Hino, Mitsubishi, Perkins,

€125



POR030

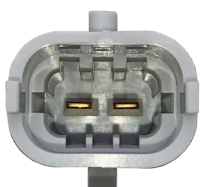
Equivalent to: [294200-0160/294009-0190](#)

Suction Control Valve

Mazda

€95

DENSO SUCTION CONTROL VALVES



POR031

Suction Control Valve

GM

Equivalent to: [294009-1500](#)
[294009-1990](#)

€210



POR032

Suction Control Valve

Isuzu, Nissan, Yanmar, Mitsubishi, Kubota, Tico, Hyundai

Equivalent to: [294009-1700](#)

€240



POR033

Suction Control Valve

Mitsubishi

Equivalent to: [294009-0250](#)

€170

VDO PRESSURE/VOLUME CONTROL VALVES



POR034

A2C20000719Z

Volume Control Valve

Citroen, Jaguar, Land Rover, Peugeot,

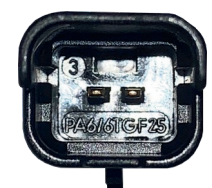


POR035

A2C2000382580

Volume Control Valve

Land Rover



POR036

A2C2720007280

Volume Control Valve

Navistar

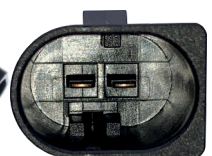


POR037

A2C53259841Z

Volume Control Valve

Renault



POR038

A2C5329064080

Volume Control Valve

VW, DV6C PSA



POR039

A2C2000070480

Pressure Control Valve

Jaguar, Range Rover, Land Rover



**ALL PRICING CORRECT AS OF APRIL 2024
PARTS SUBJECT TO AVAILABILITY**